

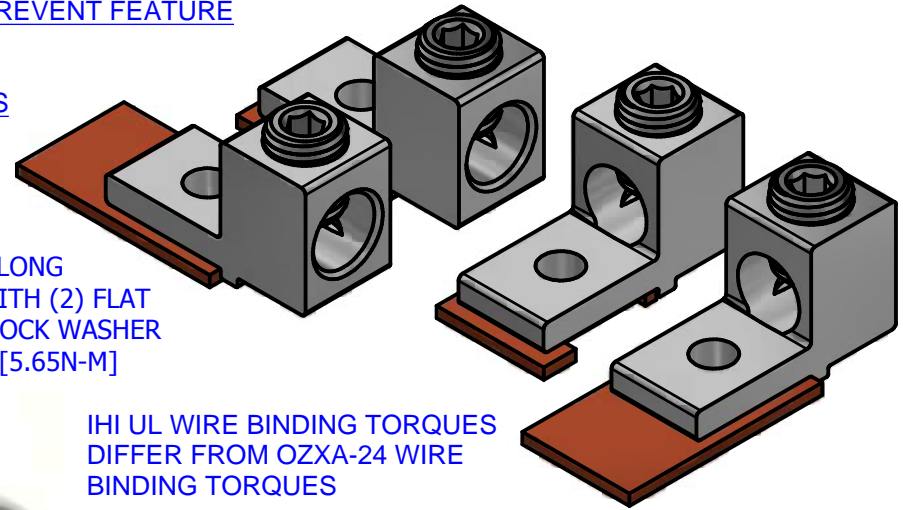
**IHI S2-0-TP-27-44-HEX AFTERMARKET LUG FITS ABB* 100A SWITCHES COMPARES WITH OZXA-24 LUG
2/0-14 CLASS B & C WIRE WITH ADDITIONAL FLEX WIRE RATINGS 1/0-14 TURN PREVENT FEATURE
SIMILAR FIT TO OEM LUG**

UL486A-B ZMVV CSA C22.2 NO. 65 CERTIFIED

S2/0-TP-27-44-HEX NOT UL98 OR UL508 RATED OR TESTED WITH ABB SWITCHES

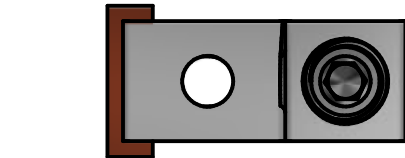
*ABB IS REGISTERED TRADEMARK OF ABB. IHI® CONNECTORS® IS NOT AFFILIATED WITH ABB.

**S2-0-TP-27-44-HEX BOLTING
INSTRUCTIONS
PURCHASE SEPARATELY
1 PER LUG : 1/4-20 x 3/4" OR 1" LONG
GRADE 5 HEX CAP HEAD BOLT WITH (2) FLAT
WASHERS, 1 NUT, AND 1 SPLIT LOCK WASHER
TIGHTEN TO 50 IN-LBS TORQUE [5.65N-M]**

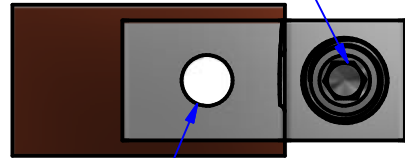


**IHI UL WIRE BINDING TORQUES
DIFFER FROM OZXA-24 WIRE
BINDING TORQUES**

UL CSA RATED WIRE SIZES, CLASSES AND BINDING SCREW TORQUE



3/16" HEX SKT.

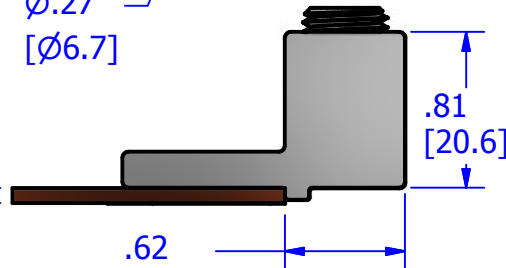


Ø.27
[Ø6.7]

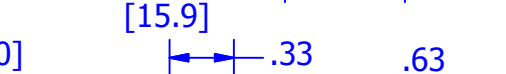


**IHI LUG PART NO.
S2-0-TP-27-44-HEX FITS
*ABB 100 AMP SWITCHES /
DISCONNECTS
*ABB 100GJ SERIES
*ABB OS100GJS SERIES
*ABB OS100J SERIES
*ABB OESA-F100 SERIES
COMPARE TO OZXA-24 LUG KIT
USE BARRIERS WHERE
APPROPRIATE TO MAINTAIN
POLE SEPARATION**

.079
[2.00]



.62
[15.9]

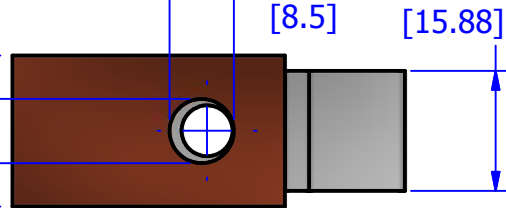


.33
[8.5]

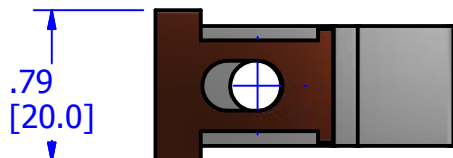
.79
[20.0]

.33
[8.5]

.63
[15.88]



LONG STYLE 100A BUS TAB ROUND MOUNTING HOLE



.79
[20.0]

SHORT STYLE 100A BUS TAB, OVAL HOLE AND CUT OUTS



**Pressure Terminal
Connectors
NRTL Cat. No.
S2/0**

2/0-14 AL9CU

90°

Wire Size Copper (solid to semi-rigid stranded and metric mm ² , ##)	All Torque in in-lbs. For N-M divide by 8.85		
	Wire Size FLEX Copper (#)	Wire Size aluminum	Torque (all drive means)
N/A	1/0-1	N/A	75
N/A	1-4	N/A	55
2/0-3	4-8	2/0-3	50
4-6	8-10	4-6	45
8	10-14	8	40
10-14	N/A	10-12	35

(#) FLEX - covers stranding classes within G, H, I/DLO,
Metric class5 and K/MTW.(##) mm2 sizes within
AWG/kcmil ranges are included.

<http://www.lugsdirect.com/GuideToFlexFlexibleFineStrandedWireCableMechanicalLugsFAQ.html>

COPYRIGHT (per latest revision date) of International Hydraulics, Inc. (IHI®). ALL RIGHTS RESERVED. This complete drawing, schematic, and design are proprietary and confidential property of International Hydraulics, Inc. IHI Connectors® in Cleveland, Ohio, and may not be duplicated, used for the basis of design or manufacture without prior written permission of its owner. Contents contain a combination of registered trademark, copyright, or patent protections exclusively owned by IHI® which are not to be infringed upon.
NOT FOR USE WHERE FAILURE CREATES A HAZARD TO HUMAN HEALTH OR SAFETY. All products are subject to this full disclaimer: <http://connectors.com/disclosure.html>

**IHI CONNECTORS INTERNATIONAL
HYDRAULICS, INC.**

**TITLE: IHI LUG FOR ABB 100AMP
SWITCHES & DISCONNECTS
IHI S2-0-TP-27-44-HEX**

**GENERAL TOLERANCES
±.015 (±0,39)**

**MATERIAL:
6061-T6**

**SIZE:
A**

**DRAWN BY:
cridley**

**REV:
1**

**FINISH:
TIN PLATED**

**DATE:
1-4-2021
REV 1. 12-12-2023**

**DWG NO.:
ABB OS100-IHI LUG
S2-0-TP-27-44-HEX**